

Waterproofing Solution



INDEX

Sr. No	Category	Product Name	Pg No
1	SINGLE COMPONENT ACRYLIC BASE	POLYCOTE WH	1
2	SELASTOMERIC WATERPROOFING	POLYCOTE BB/BBX	1
3	LIQUID MEMBRANE	SUPERKOT	2
4	ACRYLIC TRANSPARENT COATING	POLCOTE WH100	2
5	CRYSTALLINE WATERPROOFING	POLYCOTE CWP	3
6	PU WATER PROOFING WATER BASED	SMARZKOT PLATINUM	3
7	PU WATER PROOFING SOLVENT BASED	REDISEAL 250	4
8	FIBER GLASS NET	45 GSM	4
9	GEOTEXTILE NET	45 GSM	4
10	INJECTION GROUT EPOXY	INJECTOFIL ECO	5
11	INJECTION GROUT PU	REDWOP PU200	5
12	POLYUREA WATERPROOFING	REDOPOL 264	6
13	QUICKSET CEMENT	PLUGFAST	6
14	QUICKSET LIQUID	MICROCON 2A	7
15	BITUMEN EMULSION PAINT	BITULAY	7

Waterproofing Chemicals

POLYCOTE WH Single Component Arcylic Base

Product	Single component acrylic
Redwop Product Code	Polycote WH
Part	Single part
Color	White
Technical Information	
Appearance	Liquid
Ph	11 to 12
Tensile Strength	4N/mm ²
Setting Time	24 hrs
Coverage	Primer 60 to 70ft ² per liter Top coat 40 to 45 fr2 per liter



Use

Roof
Terrace
Toilet
Bathrooms
Canal Exterior walls and walls
subjected to rain in all low and
high rise buildings

Advantage

For potable water tanks
Tough waterproof membrane
Brush/roller application
Strong adhesion
Excellent waterproofing
Needs mechanical key for tiling

Application Procedure

Surface cleaning: Remove loose material from the surface by grinders and wire brush, opens crack in v shape, Fill the acrylic sealant in the v shape cracks.

Application procedure:

Primer coat :Mix Polycote WH, water and Cement in the ratio of 1:2:4 as primer coat. Then apply by brush or roller

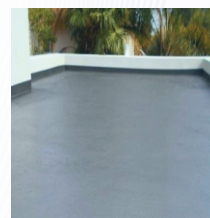
Top coat : Mix Polycote WH and Cement in the ratio of 1:2 properly and apply on the surface with roller and brush

Safety: Wear hand gloves & Goggles while application works

Packing Size: 500ml, 1,5,10,20,50 liter

POLYCOTE BB/BBX Elastomeric Waterproofing

Product	Two component Elastomeric waterproofing membrane
Redwop Product Code	Polycote BB/BBX
Part	Two part (one part liquid and other part Powder)
Appearance	Powder - grey & white, Liquid – White liquid
Technical Information	
Tensile Strength	>2N/mm ² 28days.
Pot life	approx.4 hours @ 20°C
Elongations	> 150% (min 1mm thick)
Coverage	Primer 60 to 70ft ² per liter (Polycote WH) Top coat 80 to 100 fr ² per 15kg set.



Use

Roof
Terrace
Toilet
Bathrooms
Swimming pools
External wall of buildings
New or Old water tank

Advantage

Elastomeric & UV resistant
Light reflective (with BBX) For flat & sloping roofs
Excellent waterproofing
Safe for potable water
Needs mechanical key for tiling

Application Procedure

Surface Cleaning: Remove loose material using grinder/wire brush. Open cracks in V-shape and fill with acrylic sealant.

Application Procedure:

Primer Coat: Mix Polycote WH, water, and cement (1:2:4) and apply by brush/roller.

Top Coat: Mix Polycote BB (powder:liquid = 2:1) and apply with brush/roller. Use 45gsm fiber glass mesh or geotextile 45gsm mesh for added strength.

Safety: Wear hand gloves & Goggles while application works

Packing Size: 3, 15, 30 & 150Kg. Pack

Waterproofing Chemicals

SUPERKOTE Liquid Membrane

Product	Liquid membrane
Redwop Product Code	Superkot
Part	Single
Appearance	White liquid
Technical Information	
Elongations	250%
Surface dry time	30°C
Time between Coat	30min
Coverage	250 to 260ft ² per 20 ltr @ thickness of 0.8mm



Use

Roof
Terrace- Flat& Slope.
Bridges
RCC structure, Masonry wall
All type low- and high-rise
building
Industrial building

Advantage

Provides flexible and durable dry
film thickness & good crack
capacity.
UV resistance with excellent
waterproofing capacity.
Can be used for flat as wall as
sloping roofs.
Use as a exterior paints.
Excellent waterproofing properties

Application Procedure

Surface Cleaning: Remove loose material with grinder/wire brush.
Open cracks in V-shape and fill with acrylic sealant.

Application Procedure:

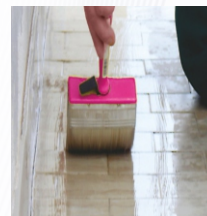
Primer Coat: Mix 1L Superkot with 300ml water and apply.
Top Coat: Use Superkot as-is; adjust water for brushable viscosity.
Apply with brush/roller. Use 45gsm fiber/geotextile mesh for added
strength.

Safety: Wear hand gloves & Goggles while
application works

Packing Size: 1,5,10,20 ltr

POLYCOTE WH 100 Acrylic Transparent coating base

Product	Acrylic Transparent coating
Redwop Product Code	Polycote WH 100
Part	Single part
Appearance	White liquid
Technical Information	
Active content	50+1%
Pot life	RCC, China mozaik, stone surface
Bonding good	1000 to 2000 m pa. s
Coverage	Top coat 40 to 50 ft ² per ltr



Use

Roof
Terrace
Reservoirs and Channels
End walls subjected to rain in all
low & high rise buildings
China mozaik

Advantage

Tough & non yellowing coating
Excellent Adhesion to most of the
exterior surface
Gives excellent water resistance
Good durable layer

Application Procedure

Surface cleaning: Remove loose material from the surface by
grinders and wire brush, opens crack in v shape, Fill the acrylic
sealant in the v shape cracks.

Application procedure:

Top coat : Mix Polycote WH 100 and apply on the surface with roller
and brush

Safety: Wear hand gloves & Goggles while
application works

Packing Size: 1,5,10,20 ltr

Waterproofing Chemicals

POLYCOTE CWP Crystalline Waterproofing

Product	Crystalline waterproofing
Redwop Product Code	Polycote CWP
Part	Single powder
Appearance	Grey powder
Technical Information	
Water Resistance	13 bar (N/mm ²)
Coverage	5ft ² per kg @ 1.25mm thick



Use

Basement
Sewage Treatment
Water treatment plants
Tank, Foundation, Swinging pool
Water retention wall

Safety: Wear hand gloves & Goggles while application works

Advantage

Excellent bonding with RCC and mortar surface
Easy to apply
Healing of crack 0.4mm thick. Anti carbonation properties
Uses near or inside sea construction
Useful in industrial area
Portable water tank
Negative waterproofing

Application Procedure

Surface cleaning:
Remove loose material from the surface by grinders and wire brush, opens crack in v shape, Fill the acrylic sealant in the v shape cracks.
Application procedure:
Mix 1 kg Polycote CWP powder with 300ml clean water and apply using smooth brush and cloth

Packing Size: 20Kg Bag

SMARZKOT PLATINUM PU waterproofing water based

Product	PU waterproofing water based
Redwop Product Code	Smarzkot Platinum
Part	Single Liquid
Appearance	White liquid
Technical Information	
VOCt	<2%
Surface drying time	Max 60min
Tear resistance	18N/mm ²
Pull of Adhesion to concrete	19N/mm ²
DFT	500micron
Pull off adhesion to mosaic tile	1.82N/mm ²



Use

Terrace
Water tank
Toilet bathroom
External wall surface
Swimming pool

Advantage

Easy application
Excellent bond to the substrate
Waterproofing
Durability
Good Elongation properties

Application Procedure

Surface cleaning:
Remove loose material, alga & dust from the surface by wire brush or graders. Opens crack in v shape, Fill the acrylic sealant in the v shape cracks.
Primer coat: Add 20% water in the bucket for primer coat application.
Application procedure: Add water as viscosity adjustment in the bucket for top coat application

Safety: Wear hand gloves & Goggles while application works

Packing Size: 10 & 20 Kg

Waterproofing Chemicals

REDISEAL 250 PU waterproofing solvent based

Product	PU waterproofing solvent based
Redwop Product Code	Rediseal 250
Part	Single Liquid
Appearance	White liquid / Light grey Liquid
Technical Information	
VOC†	<2%
Surface drying time	Max 60min
Tensile adhesion	4N/mm2
Elongation	600%
Crack bridging	up to 2mm



Use

Terrace
Terrace Garden
Water tank
Toilet bathroom
External wall surface
Swimming pool

Advantage

Easy application
Excellent bond to the substrate
Waterproofing
Durability
Good Elongation properties

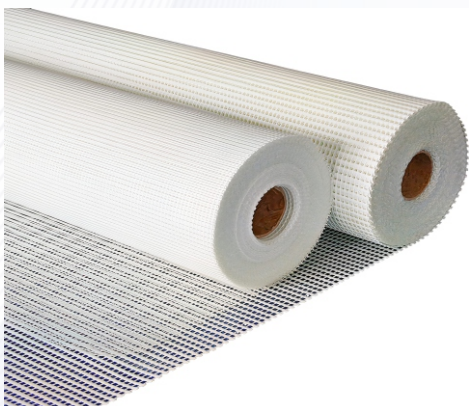
Application Procedure

Surface cleaning: Remove loose material, alga & dust from the surface by wire brush or graders.
Opens crack in v shape, Fill the PU sealant in the v shape cracks.
Primer coat: Add Redwop sol 10% for primer coat application.
Application procedure: Add Redwop sol as viscosity adjustment in the bucket for top coat application

Safety: Wear hand gloves & Goggles while application works

Packing Size: 25Kg Bucket

Use for extra strength in Waterproofing



FIBER MESS 45GSM ROLL



TEXO FABRIC MESH 45GSM ROLL

Waterproofing Chemicals

INJECTOFIL ECO Injection grout Epoxy

Product	Low viscosity epoxy injection resin grout
Redwop Product Code	Injectofil ECO
Part	Two Liquid part, Resin & Hardener
<i>Technical Information</i>	
Appearance	Hazy clear liquid
Gel time	30 to 45 min
Compressive strength	45 N/mm ²



Use

RCC cracks
Honeycombs
Concrete cavities
Grouting narrow gaps (<5mm)
Permanent sealing in concrete, brickwork & stone
For permanent watertight sealing in concrete, brickworks and natural stones

Safety: Wear hand gloves & Goggles while application works

Advantage

Low viscosity for fine cavities/gaps
High strength for heavy loads
Easy-to-use two-part system
Non-shrinkExcellent chemical resistance

Application Procedure

Surface cleaning: Remove loose material from the surface.

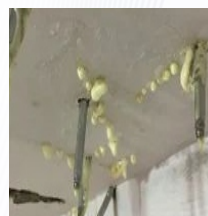
Application procedure:

Drilling hole as 2mm higher dia then nozzle dia, Put nozzle inside hole and rotate it as clock wise then pack by plugfast. Mix resin and hardener and put it in pump bowl and start the pump to pressurized injectofil inside honeycomb and crack of concrete. Keep wait for 24 hrs and clean the pump equipment by REDWOP SOL.

Packing Size: 15& 30 Kg Set

REDWOP PU200 Injection grout PU

Product	Semi rigid flexible foam polyurethane injection resin
Redwop Product Code	Redwop PU200
Part	Single Liquid
Appearance	Dark brown liquid
<i>Technical Information</i>	
Appearance	Hazy brown liquid
Expansion time	up to 20 min
Expand volume	20times



Use

Honeycombs
RCC cracks
Concrete cavities
Grouting base plates (<5mm gaps)
Watertight sealing in concrete, brickwork & stone

Safety: Wear hand gloves & Goggles while application works

Advantage

Non shrink grout
Good penetration in to cracks
Chemical resistance
Long lasting
Solvent free eco friendly

Application Procedure

Surface cleaning: Remove loose material from the surface.

Application procedure:

Drilling hole as 2mm higher dia then nozzle dia, Put nozzle inside hole and rotate it as clock wise then pack by plugfast. Well stir PU200 and put it in pump bowl and start the pump to pressurized material inside honeycomb and crack of concrete. Keep wait for 0.50hrs and clean the pump equipment by REDWOP SOL.

Packing Size: 10 Kg

Waterproofing Chemicals

REDOPOL 264 High Strength Waterproofing Membrane

Product	High Strength Waterproofing Membrane
Redwop Product Code	Redopol 264
Part	Two Part
Appearance	Light Grey
<i>Technical Information</i>	
Tensile strength	> 10 N/mm ²
Elongation	> 350 %
Water absorption	< 2.5%
Gel time	15-25 mins.



Use

Terraces
Podium
Slabs
Car-park decks,
and is equally suited
for roofing
projects

Advantage

Outstanding mechanical strength
Thermoset formulation that remains stable
even at high temperatures
Forms a continuous, fully bonded layer
Seamless application with no joints or
overlaps
High resistance to punctures
Superior ability to bridge and cover cracks

Application Procedure

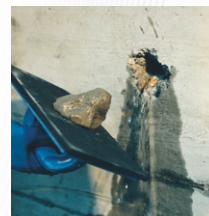
Ensure surface is sound, dry, and free from dust, oil, or grease
Remove loose particles, old coatings, and contaminants for a clean
base
Mix the REDOPOL 264 components A and B together in a 1:1 ratio
by volume or weight, ensuring a thorough and uniform blend
before application.

Safety: Wear hand gloves & Goggles while
application works

Packing Size: 10 & 40 Kg Set

PLUGFAST Quickset cement

Product	Leak Plugging Mortar
Redwop Product Code	Plugfast
Part	Single powder part
Appearance	Grey Powder
<i>Technical Information</i>	
Compressive Strength	25N/mm ²
Setting time	5 to 10 min



Use

Rapid temporary patching
Plugging of concrete segments
Concrete and brick tunnel
linings
Cement pipes
Basement

Advantage

Easy application
Excellent bond to the substrate
Waterproofing
Durability

Application Procedure

Surface cleaning:
Remove loose material from the surface & make a proper space for
application
Application procedure:
Add 0.75kg plugfast in 250ml water, make it proper paste.
Pressurized on proper space of the work by hand pressure for 5 min.
Leakage stoped Then do proper micro concrete work over it.

Safety: Wear hand gloves & Goggles while
application works

Packing Size: 1,5, & 20 Kg Set

Waterproofing Chemicals

MICROCONC 2A Quickset Liquid

Product	Rapid setting Liquid Fast plugging
Redwop Product Code	Microconc 2A
Part	Single Liquid part
Color	Light Yellow liquid



Use

Rapid temporary patching
Plugging of concrete segments
Concrete and brick tunnel
linings
Cement pipes
Basement

Advantage

Easy application
Excellent bond to the substrate
Waterproofing
Durability

Application Procedure

Surface cleaning: Remove loose material from the surface & make a proper space for application

Application procedure:

Mix cement powder in a 2A as it becomes proper sticky paste, wait for little warm paste observed then immediately apply on the space work by hand pressured just for 30 to 60 second.
if succeed Then do proper micro concrete work over it.

Safety: Wear hand gloves & Goggles while application works

Packing Size: 10 & 20 Kg Bucket

BITULAY Bitumen Emulsion Paint

Product	Bitumen Emulsion Paint
Redwop Product Code	Bitulay
Part	Single powder part
Appearance	Black Liquid
Technical Information	
Solid Content	35 ± 5
Setting time	24 hrs



Use

Damp-proofing for below-ground concrete above water table
Moisture barrier before cladding on block/concrete
Protective coating for built-up roofing with fabric

Advantage

Resists chloride and sulphate attacks from soil.
Easy to apply
Cold applied
Adheres to concrete
Can be applied in closed or confined spaces
Water-based

Application Procedure

Surface cleaning:

Remove loose material from the surface & make a proper space for application

Application procedure:

Stir well before use. Apply with roller, brush, or spray at 1–4 m²/Ltr/coat, based on thickness needed. Apply second coat at right angle to the first.

Safety: Wear hand gloves & Goggles while application works

Packing Size: 20 Kg Bucket

VALUABLE CUSTOMERS

Ahmedabad Municipal Corporation
Nayara Ltd.
Banas Dairy
Nirma Ltd.
Brihanmumbai Municipal Corporation
PWD (Bhopal)
Delhi Metro Rail Corporation Ltd.
PWD Maharashtra
Gail India Ltd.
Rajkot Municipal Corporation
Gujarat Metro Rail Corporation Ltd.
Railway - DRM Office
Gujarat State Electricity Corporation Ltd.
Reliance Industries Ltd.
Indian Oil Corporation Limited
Sardar Sarovar Narmada Nigam Ltd.
Kandla Port Shell
Maharashtra Housing and Area Development Authority Surat
Municipal Corporation
Military Engineering Services
Uttar Pradesh State Bridge Corporation Ltd.
National Highway Authorities of India
Water Resource Department (Bhopal)

SOLUTIONS FOR EVERY SECTORS



Building



Airport



Railway



Roadway



Marine Structure



Defence Structure



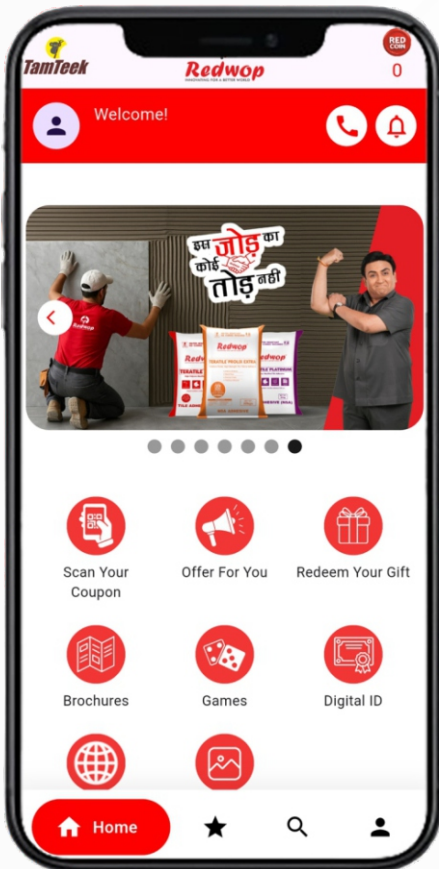
Dam & Irrigation



Oil & Gas Plant



PARTNER
Mobile App



App Features

- Scan Coupon
- Offer For You
- Redeem Gifts
- Wallet
- Red coins
- Notification

Scan More
Earn More
Redeem More

Available on



For More Information

+91 75739 17310





REDWOP CHEMICALS PVT. LTD.

2nd Floor, Pearl Plaza Complex, Nr. GT Sheth School,
150ft Ring Road, Rajkot-360005, Gujarat, INDIA

info@redwop.net www.redwop.net +91 97246 55551 +91 281 2576664