

TILE & STONE ADHESIVE



IS : 9103



CM/L-7600149811

IS : 2645



CM/L-7600150113

IS : 15477



CM/L-7600053713

IS : 14948



CM/L-7600185217



17025:2017



45001:2018



9001:2015



14001:2015



IGBC

TILE & STONE ADHESIVE



Type - I



Type - II



Type - II



Type - II



Type - II



Type - II



Type - II



Type - III



Type - III



Type - III



Type - IV



Type - IV



Type - V



Type - V



Bonding Enhancer



Epoxy Grout



Sanded Grout



Polymer Grout



TILES APPLICATION PROBLEM & SOLUTION



Reason for Debonding Tiles

- Substrates damp & Saline Surface
- Lack of spacing between tiles
- Poor workmanship
- Steel trowel not used while Application
- Incorrect products consultation
- Extra cement and Sand addition
- External Impact or Jerk
- Thermal Expansion and Contraction
- Water is not sprayed to the substrate -prior to commencing the work.



Mitigation

- Ensure surface of substrates- should be clean or strong.
- Maintain Sufficient gap between tile to- accomodate expansion and contraction.
- Use steel trowel on both Surfaces - Substrate and tile back side.
- Spray water on substrate before work started.
- To increase bonding Strength- Use **ADMIX EXTRA BOND**.

Fix the Root Cause
of Tile **Debonding**.

PRODUCT CONSULTATION

1. CONSULTATION FOR TILE ADHESIVE

TILE SIZE

A) 12x18, 1'x1'	TERATILE CLASSIC
B) 2'x4', 4'x4'	TERATILE SILVER, TERATILE GP, TERATILE SP
C) 2'x4', 4'x4'	TERATILE GOLD, TERATILE MP, TERATILE SINEX
D) 2.5'x5'	TERATILE DIAMOND, TERATILE EMERALD
E) 4'x6', 8' x 4'	TERATILE PLATINUM
F) 6'x 8'	TERATILE PROLIX
G) Above 8'	TERATILE PROLIX EXTRA

2. CONSULTATION FOR STONE ADHESIVE

STONE SIZE

Up to 2 ft	TERATILE SILVER, TERATILE GP, TERATILE SP
3 to 4 ft	TERATILE GOLD, TERATILE SINEX, TERATILE MP
4 to 6 ft	TERATILE DIAMOND, TERATILE EMERALD, TERATILE PLATINUM,
6 to 8 ft	TERATILE PROLIX
Above 8 ft	TERATILE PROLIX EXTRA

For granite fixing it is very important that back side of Granite stone has to be cured with our product named ADMIX EXTRA BOND, which is two pack products used to increase bonding strength.

Note: On parapet to provide a minimum gap of 1 to 3mm to adjust expansion and contraction.

3. STONE / TILES ON WOOD, STEEL & ALUMINUM

Stone, tiles - application on Wood, Steel, Alluminium.

We can use **Flexo Plus & Flexo PU** Adhesive

TILE ADHESIVE

ADMIX EXTRA BOND

Tile Adhesive Bonding Enhancer

Product	Tile Adhesive Bonding Enhancer
Redwop Product Code	Admix Extra Bond
Part	Two Part (2kg powder & 1kg Liquid)(2:1)
Color	Grey & White (Mixed Color)
Technical Information	
Appearance	Liquid
Ph	11 to 12
Tensile Strength	4N/mm ²
Setting Time	24 hrs
Packing Size	3kg, & 30kg Set
Coverage	20ft ² per 1kg (as per surface status)



Use

Tile on Tile
Natural Stone
Artificial Stone

Advantage

Improves the adhesion
Reduces water permeability.
Improves the toughness & flexibility
Improves resistance to water vapor.

Application Procedure

Mix powder part in a liquid properly and maintain consistency, then apply by Brush or Roller

Safety: Wear hand gloves & Goggles while application works

Packing Size: 3 & 30 kg pack

TERATILE CLASSIC Type-I, C1TE

Parameters as per IS:15477

Properties	Specification
Tensile Strength Dry Condition	0.5N/mm ²
Shear strength Dry Condition	-
Open Time	>20 Min
Adjustability time	>20 Min
Slip Resistance	<0.5 mm
Deformability	-
S1	-
S2	-
Appearance	Grey Powder
Potlife	2 hr
PH	11 to 12



3★ ★ ★



Use

Ceramic Tiles
Horizontal Tiles

Advantage

Easy to apply
Good tensile & -bonding Strength
Self Curable

Application Procedure

Mix 20kg of adhesive powder in Sufficient quality of water then mix it properly then apply it by steel trowel.

Safety: Wear hand gloves & Goggles while application works

Packing Size: 20 & 40 kg Bag



TILE ADHESIVE

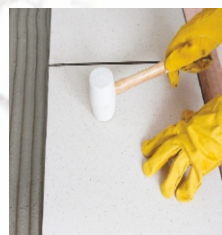
TERATILE GP Type-II, C2TE

Parameters as per IS:15477

Properties	Specification
Tensile Strength Dry Condition	$>1\text{N/mm}^2$
Shear strength Dry Condition	$>1.25\text{N/mm}^2$
Open Time	$>20\text{ Min}$
Adjustability time	$>20\text{ Min}$
Slip Resistance	$<0.5\text{ mm}$
Deformability	-
S1	-
S2	-
Appearance	Grey Powder
Potlife	2 hr
PH	11 to 12



5★★★★★



Use

Ceramic Tiles
Vitrified Tiles
Stone

Advantage

Easy to apply
Good tensile &
-bonding Strength
Self Curable

Application Procedure

Mix 20kg of adhesive powder in
Sufficient quality of water then
mix it properly then
apply it by steel trowel.

Safety: Wear hand gloves & Goggles while
application works

Packing Size: 20 & 40 kg Bag

TERATILE SILVER Type-II, C2TE

Parameters as per IS:15477

Properties	Specification
Tensile Strength Dry Condition	$>1\text{N/mm}^2$
Shear strength Dry Condition	$>1.25\text{N/mm}^2$
Open Time	$>20\text{ Min}$
Adjustability time	$>20\text{ Min}$
Slip Resistance	$<0.5\text{ mm}$
Deformability	-
S1	-
S2	-
Appearance	Grey Powder
Potlife	2 hr
PH	11 to 12



5★★★★★



Use

Ceramic Tiles
Vitrified Tiles
Stone

Advantage

Easy to apply
Good tensile &
-bonding Strength
Self Curable

Application Procedure

Mix 20kg of adhesive powder in
Sufficient quality of water then
mix it properly then
apply it by steel trowel.

Safety: Wear hand gloves & Goggles while
application works

Packing Size: 20 & 40 kg Bag

TILE ADHESIVE

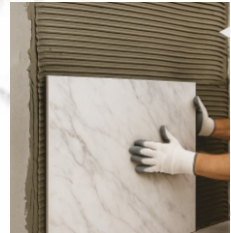
TERATILE SP Type-II, C2TE

Parameters as per IS:15477

Properties	Specification
Tensile Strength Dry Condition	$>1\text{N/mm}^2$
Shear strength Dry Condition	$>1.25\text{N/mm}^2$
Open Time	$>20\text{ Min}$
Adjustability time	$>20\text{ Min}$
Slip Resistance	$<0.5\text{ mm}$
Deformability	-
S1	-
S2	-
Appearance	Grey Powder
Potlife	2 hr
PH	11 to 12



5★★★★★



Use	Advantage	Application Procedure
Ceramic Tiles Vitrified Tiles Stone	Easy to apply Good tensile & -bonding Strength Self Curable	Mix 20kg of adhesive powder in Sufficient quality of water then mix it properly then apply it by steel trowel.

Safety: Wear hand gloves & Goggles while application works

Packing Size: 20 & 40 kg Bag

TERATILE MP Type-II, C2TE

Parameters as per IS:15477

Properties	Specification
Tensile Strength Dry Condition	$>1\text{N/mm}^2$
Shear strength Dry Condition	$>1.25\text{N/mm}^2$
Open Time	$>20\text{ Min}$
Adjustability time	$>20\text{ Min}$
Slip Resistance	$<0.5\text{ mm}$
Deformability	-
S1	-
S2	-
Appearance	Grey Powder
Potlife	2 hr
PH	11 to 12



7★★★★★★★



Use	Advantage	Application Procedure
Ceramic Tiles Vitrified Tiles Stone/Granite Framing Tile on Tile	Easy to apply Good tensile & -bonding Strength Self Curable	Mix 20kg of adhesive powder in Sufficient quality of water then mix it properly then apply it by steel trowel.

Safety: Wear hand gloves & Goggles while application works

Packing Size: 20 & 40 kg Bag

TILE ADHESIVE

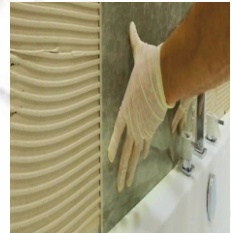
TERATILE GOLD Type-II, C2TE

Parameters as per IS:15477

Properties	Specification
Tensile Strength Dry Condition	$> 1\text{N/mm}^2$
Shear strength Dry Condition	$> 1.25\text{N/mm}^2$
Open Time	> 20 Min
Adjustability time	> 20 Min
Slip Resistance	< 0.5 mm
Deformability	
S1	-
S2	-
Appearance	Grey Powder
Potlife	2 hr
PH	11 to 12



7★★★★★★



Use	Advantage	Application Procedure
Ceramic Tiles	Easy to apply	Mix 20kg of adhesive powder in
Vitrified Tiles	Good tensile &	Sufficient quality of water then
Stone/Granite	-bonding Strength	mix it properly then
Framing	Self Curable	apply it by steel trowel.
Tile on Tile		

Safety: Wear hand gloves & Goggles while application works

Packing Size: 20 & 40 kg Bag

TERATILE SINEX Type-II, C2TE

Parameters as per IS:15477

Properties	Specification
Tensile Strength Dry Condition	$> 1\text{N/mm}^2$
Shear strength Dry Condition	$> 1.25\text{N/mm}^2$
Open Time	> 20 Min
Adjustability time	> 20 Min
Slip Resistance	0.5 mm
Deformability	
S1	-
S2	-
Appearance	Grey Powder
Potlife	2 hr
PH	11 to 12



7★★★★★★



Use	Advantage	Application Procedure
Ceramic Tiles	Easy to apply	Mix 20kg of adhesive powder in
Vitrified Tiles	Good tensile &	Sufficient quality of water then
Stone/Granite	-bonding Strength	mix it properly then
Framing	Self Curable	apply it by steel trowel.
Tile on Tile		

Safety: Wear hand gloves & Goggles while application works

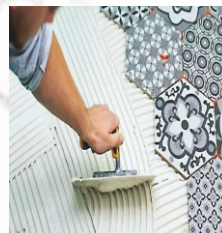
Packing Size: 20 & 40 kg Bag

TILE ADHESIVE

TERATILE DIAMOND Type-III, C2TES1

Parameters as per IS:15477

Properties	Specification
Tensile Strength Dry Condition	$> 1.5\text{N/mm}^2$
Shear strength Dry Condition	$> 1.5\text{N/mm}^2$
Open Time	> 20 Min
Adjustability time	> 20 Min
Slip Resistance	< 0.5 mm
Deformability	
S1	$> 2.5\text{mm}$
S2	-
Appearance	Grey / White Powder
Potlife	2 hr
PH	11 to 12



Use

Ceramic Tiles
Vitrified Tiles
Stone/Granite
Framing
Tile on Tile

Advantage

Easy to apply
Good tensile &
-bonding Strength
Self Curable

Application Procedure

Mix 20kg of adhesive powder in
Sufficient quality of water then
mix it properly then
apply it by steel trowel.

Safety: Wear hand gloves & Goggles while
application works

Packing Size: 20 & 40 kg Bag

TERATILE EMERALD Type-III, C2TES1

Parameters as per IS:15477

Properties	Specification
Tensile Strength Dry Condition	$> 1.5\text{N/mm}^2$
Shear strength Dry Condition	$> 1.5\text{N/mm}^2$
Open Time	> 20 Min
Adjustability time	> 20 Min
Slip Resistance	< 0.5 mm
Deformability	
S1	$> 2.5\text{mm}$
S2	-
Appearance	Grey / White Powder
Potlife	2 hr
PH	11 to 12



Use

Ceramic Tiles
Vitrified Tiles
Stone/Granite
Framing
Tile on Tile

Advantage

Easy to apply
Good tensile &
-bonding Strength
Self Curable

Application Procedure

Mix 20kg of adhesive powder in
Sufficient quality of water then
mix it properly then
apply it by steel trowel.

Safety: Wear hand gloves & Goggles while
application works

Packing Size: 20 & 40 kg Bag

TILE ADHESIVE

TERATILE PLATINUM Type-III, C2TES1

Parameters as per IS:15477

Properties	Specification
Tensile Strength Dry Condition	$> 1.5\text{N/mm}^2$
Shear strength Dry Condition	$> 1.5\text{N/mm}^2$
Open Time	> 20 Min
Adjustability time	> 20 Min
Slip Resistance	< 0.5 mm
Deformability	
S1	> 2.5 mm
S2	-
Appearance	Grey / White Powder
Potlife	2 hr
PH	11 to 12



Use	Advantage	Application Procedure
Ceramic Tiles	Easy to apply	Mix 20kg of adhesive powder in
Vitrified Tiles	Good tensile &	Sufficient quality of water then
Stone/Granite	-bonding Strength	mix it properly then
Framing	Self Curable	apply it by steel trowel.
Tile on Tile		

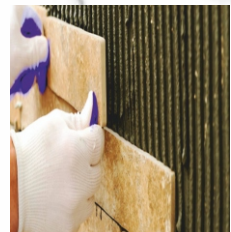
Safety: Wear hand gloves & Goggles while application works

Packing Size: 20 & 40 kg Bag

TERATILE PROLIX Type-IV, C2TES2

Parameters as per IS:15477

Properties	Specification
Tensile Strength Dry Condition	$> 1.5\text{N/mm}^2$
Shear strength Dry Condition	$> 1.5\text{N/mm}^2$
Open Time	> 20 Min
Adjustability time	> 20 Min
Slip Resistance	< 0.5 mm
Deformability	
S1	-
S2	> 5 mm
Appearance	Grey / White Powder
Potlife	2 hr
PH	11 to 12



Use	Advantage	Application Procedure
Ceramic Tiles	Easy to apply	Mix 20kg of adhesive powder in
Vitrified Tiles	Good tensile &	Sufficient quality of water then
Stone/Granite	-bonding Strength	mix it properly then
Framing	Self Curable	apply it by steel trowel.
Tile on Tile		

Safety: Wear hand gloves & Goggles while application works

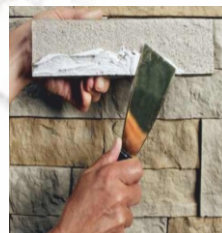
Packing Size: 20 & 40 kg Bag

TILE ADHESIVE

TERATILE PROLIX EXTRA Type-IV, C2TES2

Parameters as per IS:15477

Properties	Specification
Tensile Strength Dry Condition	$> 1.5\text{N/mm}^2$
Shear strength Dry Condition	$> 1.5\text{N/mm}^2$
Open Time	> 20 Min
Adjustability time	> 20 Min
Slip Resistance	< 0.5 mm
Deformability	-
S1	-
S2	> 5 mm
Appearance	Grey / White Powder
Potlife	2 hr
PH	11 to 12



Use	Advantage	Application Procedure
Ceramic Tiles	Easy to apply	Mix 20kg of adhesive powder in
Vitrified Tiles	Good tensile &	Sufficient quality of water then
Stone/Granite	-bonding Strength	mix it properly then
Framing	Self Curable	apply it by steel trowel.
Tile on Tile		

Safety: Wear hand gloves & Goggles while application works

Packing Size: 20 & 40 kg Bag

EPOXY ADHESIVE

FLEXOPLUS Type-V, R2S2

Product	Epoxy Adhesive
Redwop Product Code	Flexo Plus
Part	Two Part
Appearance	Resin Paste White, Hardener Paste Light Brown
Technical Information	
Water absorptions	Nil
Pot life @30°C	2 hrs
Shear Strength	$> 6\text{N/mm}^2$
Coverage	1mm thick / 1.7kg per 10ft ²



Use	Advantage	Application Procedure
Wood	High Strength	Surface cleaning: Dust to be remove
Steel	Good Bonding Strength	and make surface clean dry.
Aluminum	Flexibility	Mix Resin & Hardener as per given wt
Natural Stone		ratio & Apply on the substrate by steel
Artificial Stone		trowel then paste tiles or stone pieces.

Safety: Wear hand gloves & Goggles while application works

Packing Size: 1,2,5 & 20kg Set

PU ADHESIVE

FLEXO PU **Type-V, R1S2**

Parameters as per IS:15477

Product	PU Adhesive
Redwop Product Code	Flexo PU
Part	Single Part
Appearance	White
Technical Information	
Water absorptions	Nil
Pot life @30°C	8 hrs
Shear Strength	>3.4N/mm ²
Coverage	1mm thick /1.6kg per 10ft ²



Use	Advantage	Application Procedure
Wood Steel Aluminum Natural Stone Artificial Stone	High Strength Good Bonding Strength Flexibility	Surface cleaning: Dust to be removed and make surface clean dry. Mix properly before use, then apply on the substrate by small size steel trowel

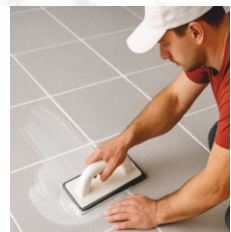
Safety: Wear hand gloves & Goggles while application works

Packing Size: 1, 5 & 20kg Bucket

EPOXY GROUT

EPTILE GROUT **Epoxy Tile Grout**

Product	Epoxy Grout
Redwop Product Code	Eptile Grout
Part	Three Part or Two Part
Appearance	Resin Hazy white & Hardener light brown
Technical Information	
Water absorptions	Nil
Pot life @30°C	2 to 4 hrs
Bonding strength to the substrate	>7N/mm ²
Coverage	3mm depth and 3mm thick will cover approx. 200ft ²



Use	Advantage	Application Procedure
Terrace Toilet Bathrooms Furniture wood works Room floor and wall Kitchen	High Strength High genic Mild acid resistance Good bonding strength Easy to cleaning	Surface cleaning: Remove grooves loose material and cleaning by air blower. Application procedure: Pre grouts: Min. 3 mm pre grouts to be filled and dry it for 24hrs Epoxy grouts: Mix resin and hardener properly then add filler as per required paste consistency. Fill in the grout then clean it by wetted spongy cloth after 20min. Then clean it by water and recleaner 100 with ration 2:1

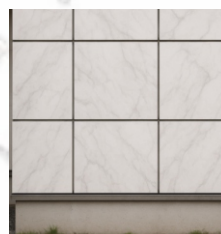
Packing Size: 1, 5, & 20 kg Set

Safety: Wear hand gloves & Goggles while application works

TILES GROUT

TERATILE ECO 2-15 Sanded Grout

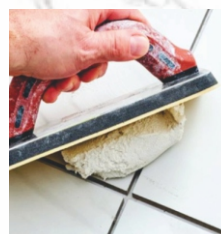
Product	Sanded Grout
Redwop Product Code	Eco 2-15
Part	Single powder
Appearance	As per shed card selected color
Technical Information	
Water absorptions	> 1%
Pot life @30°C	2 to 4 hrs
Bonding strength to the substrate	> 2N/mm ²
Coverage	as per size of grooves



Use	Advantage	Application Procedure
Terrace	High Strength	Surface cleaning: Remove grooves loose material and cleaning by air blower.
Toilet	Good bonding strength	Application procedure: Mix water in grout powder as per consistence paste, then fill it in groove of grout up to 15mm gap. Clean it by water spongy cloth.
Bathrooms	Easy to cleaning	To increase the bonding strength and minimize crack, To be added poly grout as per 100ml in 1 kg grouts
Parking area		
Elevation stone		
Packing Size: 1 , 5, & 20 kg		
Safety: Wear hand gloves & Goggles while application works		

TERATILE GROUT Polymer Modified Tile Grout

Product	Polymer Modified Tile Grout
Redwop Product Code	Teratile Grout
Part	Single powder
Appearance	As per shed card selected color
Technical Information	
Water absorptions	Nil
Pot life @30°C	Approx 2 hrs @30°C
Bonding strength to the substrate	> 1N/mm ²
Coverage	as per size of grooves



Use	Advantage	Application Procedure
Terrace	Extra fine finish	Surface cleaning: Remove grooves loose material and cleaning by air blower.
Toilet	High resistance to sunlight	Application procedure: Take pre-measured water in a clean mixing vessel. Add Teratile Tile Grout in the vessel and mix until a lump free smooth paste of uniform colour is obtained, To be added poly grout as per 100ml in 1 kg grouts
Bathrooms	Easy to cleaning	
	Designed for grouting wall & floor tiles	
Packing Size: 1 , 5, & 20 kg		
Safety: Wear hand gloves & Goggles while application works		

VALUABLE CUSTOMERS

Ahmedabad Municipal Corporation
Nayara Ltd.
Banas Dairy
Nirma Ltd.
Brihanmumbai Municipal Corporation
PWD (Bhopal)
Delhi Metro Rail Corporation Ltd.
PWD Maharashtra
Gail India Ltd.
Rajkot Municipal Corporation
Gujarat Metro Rail Corporation Ltd.
Railway - DRM Office
Gujarat State Electricity Corporation Ltd.
Reliance Industries Ltd.
Indian Oil Corporation Limited
Sardar Sarovar Narmada Nigam Ltd.
Kandla Port Shell
Maharashtra Housing and Area Development Authority Surat
Municipal Corporation
Military Engineering Services
Uttar Pradesh State Bridge Corporation Ltd.
National Highway Authorities of India
Water Resource Department (Bhopal)

SOLUTIONS FOR EVERY SECTORS



Building



Airport



Railway



Roadway



Marine Structure



Defence Structure



Dam & Irrigation



Oil & Gas Plant



PARTNER
Mobile App



App Features

- Scan Coupon
- Offer For You
- Redeem Gifts
- Wallet
- Red coins
- Notification

Scan More
Earn More
Redeem More

Available on



For More Information

+91 75739 17310





REDWOP CHEMICALS PVT. LTD.

2nd Floor, Pearl Plaza Complex, Nr. GT Sheth School,
150ft Ring Road, Rajkot-360005, Gujarat, INDIA

info@redwop.net www.redwop.net +91 97246 55551 +91 281 2576664